

Step	SLE450BZY-7
Vehicle	Fiat Scudo TW200
Entrance	Left hand side sliding door
Part No	FKFS211NSLSLE450
Date	30/06/2010



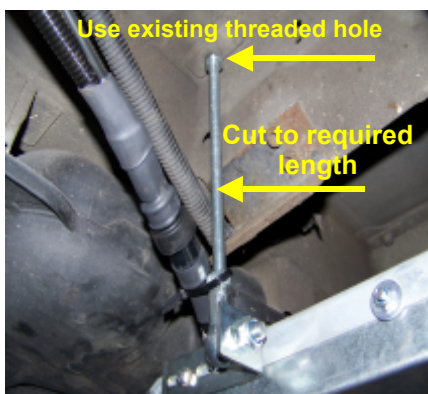
Contents

2 x FIUNISTRUTM8-1
 1 x PTFI704 Front LH Bracket
 3 x M8 Nylocs
 8 x M6 x 12

1 x PTM8BALLJ
 1 x PTFI703 Front RH Bracket
 4 x M6x25 s/s button head
 12 x M6 shakeproof washer

4 x 4010143 M8 washer
 2 x PTFI447 L & R rear Brackets
 4 x M6 Nylocs

LEFT HAND REAR



LEFT HAND FRONT



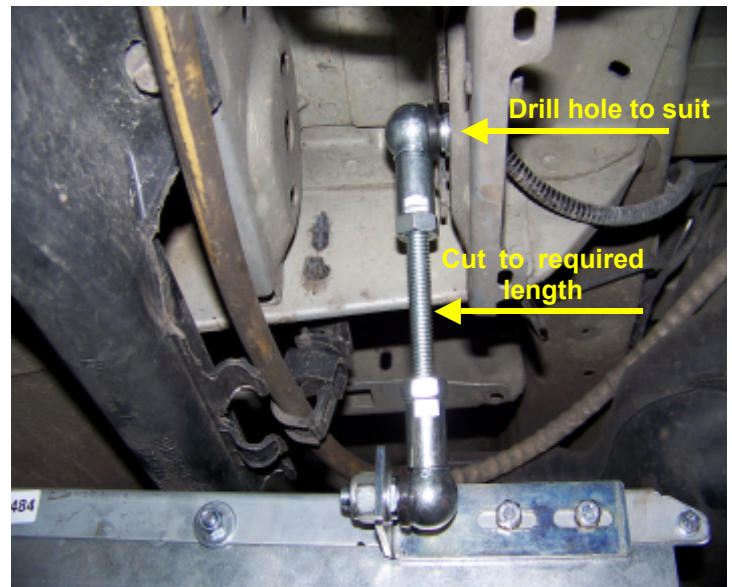
SIDE VIEW



RIGHT HAND FRONT



RIGHT HAND REAR



IMPORTANT

Use the M6x12 setscrews and shake proof washers to fit the brackets to the side of the step - do not use longer bolts as this will foul the wheels on the inside of the step and stop it operating.

Use the M6x25 s/s button head, shake proof washers and M6 nylocs to fix the front brackets to the sill